



**PIGEON**  
P L E X

DATASHEET

# FINCH

LTE/4G IoT Plug-In Module designed for Kamstrup electrical meters.

## Features and Benefits

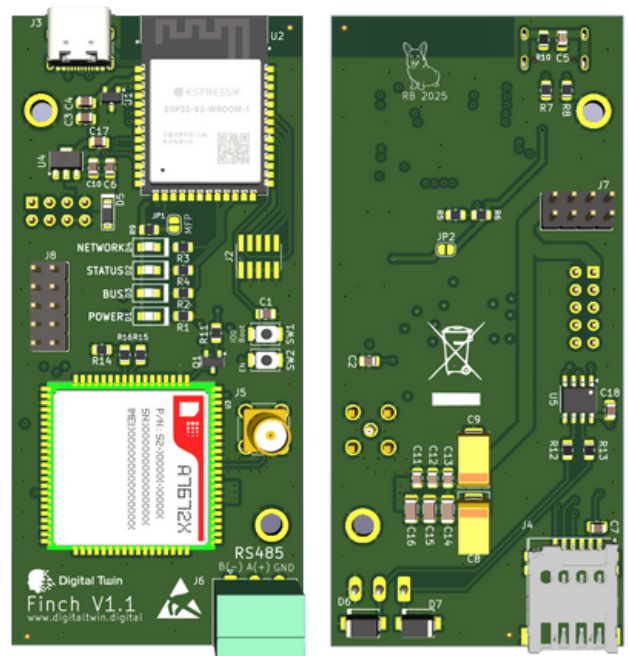
- 1 x RS485 Port
- LTE/4G Modem
- 1 x TTL UART Communication Port
- Wi-Fi
- BLE
- USB-C for Local Configuration
- Modbus RTU
- DLMS
- MQTT
- Location Via Cell Tower (CLBS)

## Technical Overview

The Finch is a compact LTE/4G IoT plug-in module engineered specifically for Kamstrup electrical meters, offering robust, cellular-based communication for metering applications.

Designed for scalable deployments, the Finch supports connectivity to multiple electrical meters and can also interface with M-Bus gateways, enabling seamless integration in complex energy monitoring infrastructures.

The Finch is built for reliable, high-speed data transmission and leverages LTE/4G cellular networks to deliver secure, real-time communication.



# Specifications

<b>Power Supply</b>	4.2V Received Directly from the Electrical Meter
<b>Communication</b>	<p>LTE</p> <ul style="list-style-type: none"> <li>CAT1 B1/B3/B8</li> </ul> <p>Bluetooth V4.2 (BLE)</p> <ul style="list-style-type: none"> <li>2.4GHz - 2.4835GHz</li> </ul> <p>Wi-Fi</p> <ul style="list-style-type: none"> <li>802.11 b/g/n</li> <li>2.4GHz - 2.4835GHz</li> </ul>
<b>Serial Port</b>	<p>1 x TTL UART</p> <p>1 x ¼ Load Chipset (RS485)</p>
<b>Protocols</b>	<p>Modbus RTU</p> <ul style="list-style-type: none"> <li>100 Points (Device config counts as one point)</li> </ul> <p>DLMS</p> <ul style="list-style-type: none"> <li>10 Devices</li> <li>45 Points Max per device</li> </ul>

